



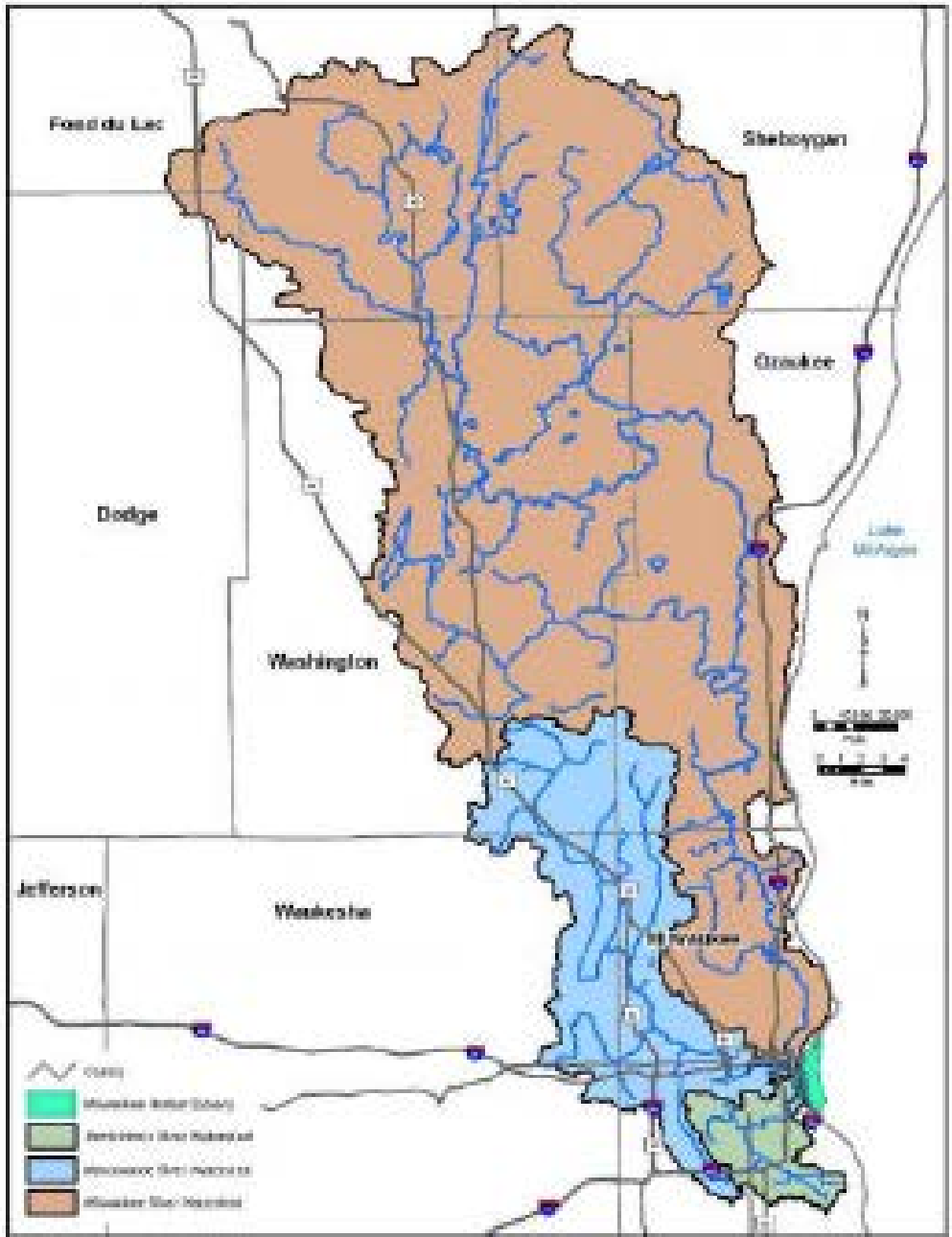
Watershed Planning

Will Kort, UW-Milwaukee & SWWT Consultant



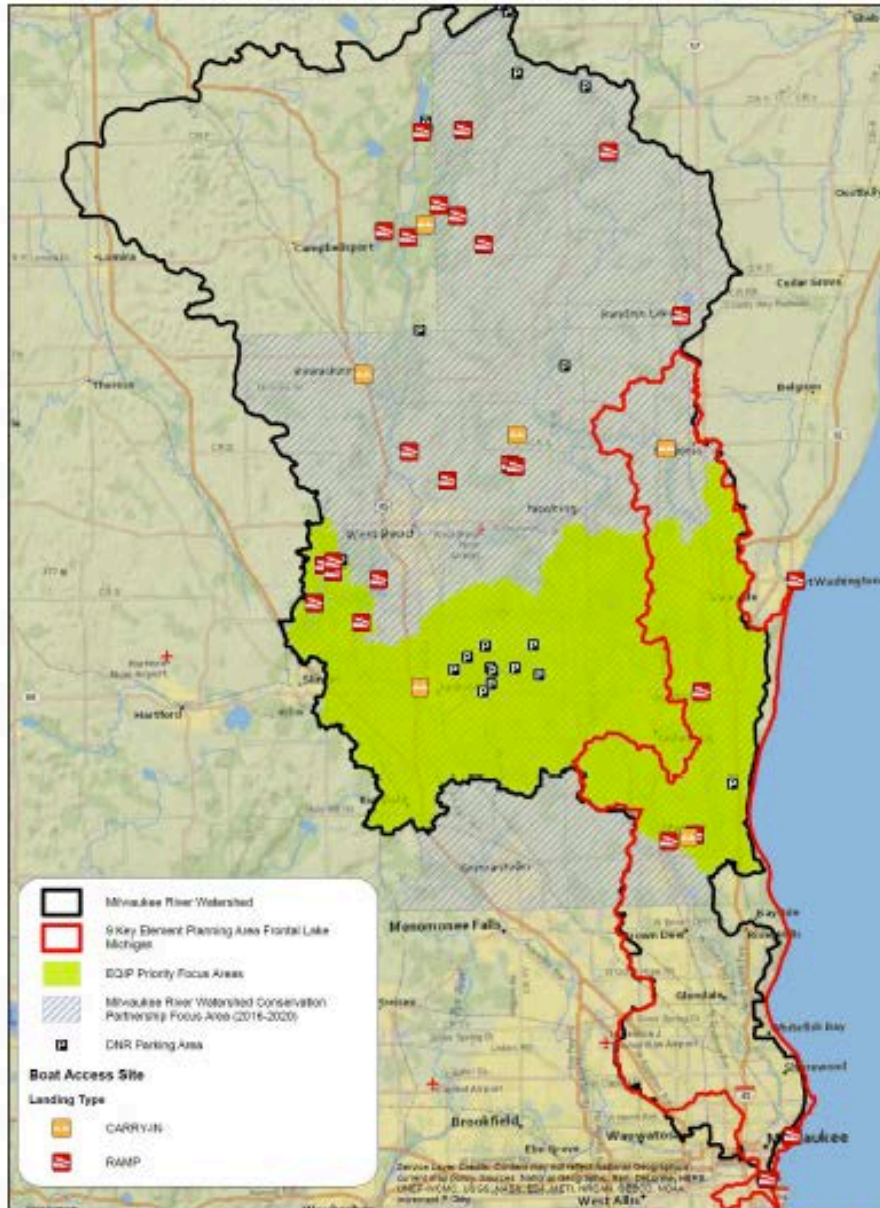
$$303(d) + 9KE + (TMDL) = \$ 319\$$$

- A.** Identify the causes and sources
- B.** Estimate pollutant loading into the watershed and the expected load reductions
- C.** Describe management measures that will achieve load reductions and targeted critical areas
- D.** Estimate the amounts of technical and financial assistance and the relevant authorities needed to implement the plan
- E.** Develop an information/education component
- F.** Develop a project schedule
- G.** Develop the interim, measurable milestones
- H.** Identify indicators to measure progress and make adjustments
- I.** Develop a monitoring component



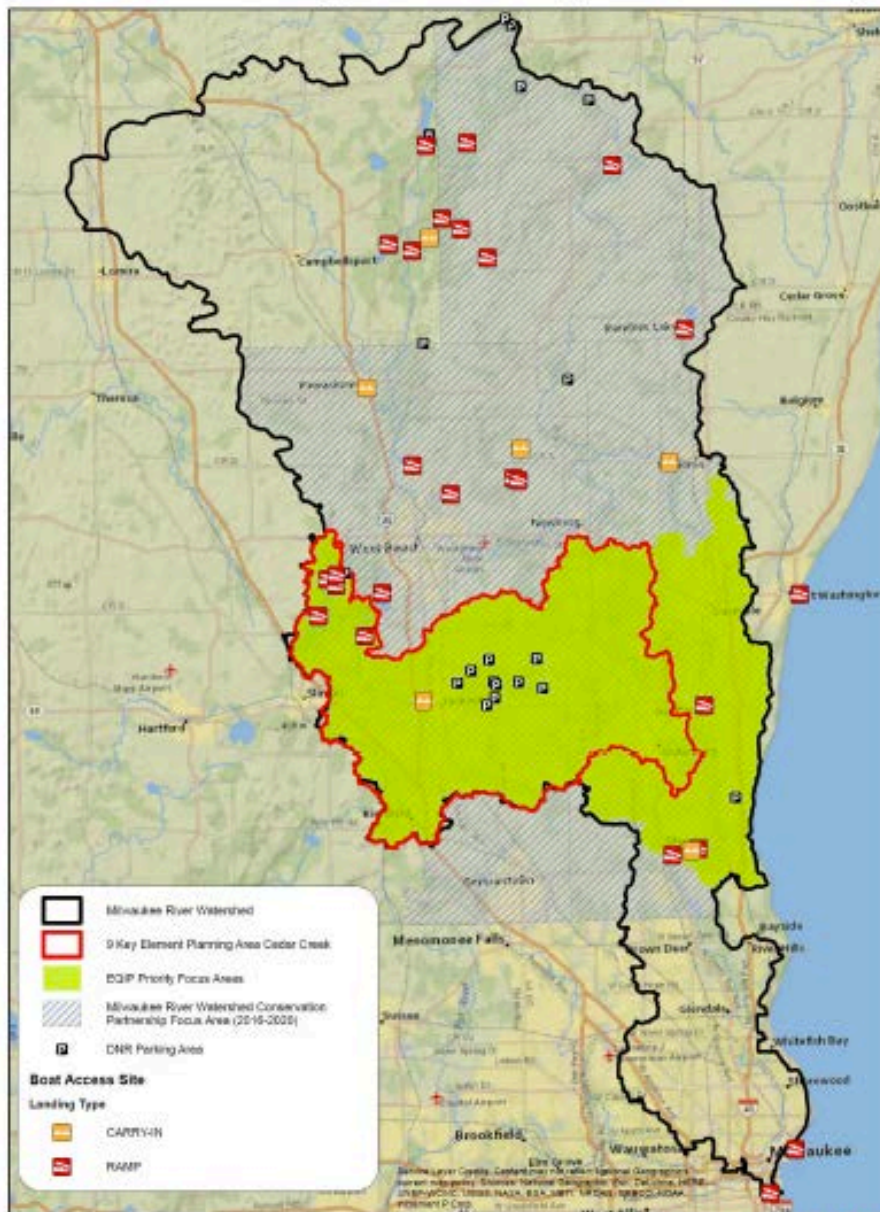


Lake Michigan Frontal Watershed (HUC10 0404000306)





Cedar Creek Nine Key Elements Plan (HUC10 0404000303)





Agricultural Conservation Planning Framework

